



Industrial SCSI Connector Introduction

The TE industrial SCSI Connector is the high density connector solution for industrial IO application, we offering the various of position spec for different applications, the 1.27mm pitch spec is allow our customer to reduce the size of the equipment, the industrial SCSI connector are providing the Right angle and vertical version on the PCB side.

To be more fitable to industrial application,TE is now bring the soldering version and screw locking version into the industrial market, which provide the flexibility for our customers to install the product in a more flexibility way.

KEY FEATURES

- High Density, 1.27mm Pitch
- 14/20/26/36/50 Pin available
- Right angle and Vertical version available
- Soldering version available
- Screw locking

APPLICATION

- Motion Drive
- CNC Controller

MECHANICAL

- 14/20/26/36/50 position
- Operating temperature: -40°C to 85°C
- Durability: 500 cycles

ELECTRICAL

- 200V rated
- Wire-to-board
- Current rating: 1 AMPS

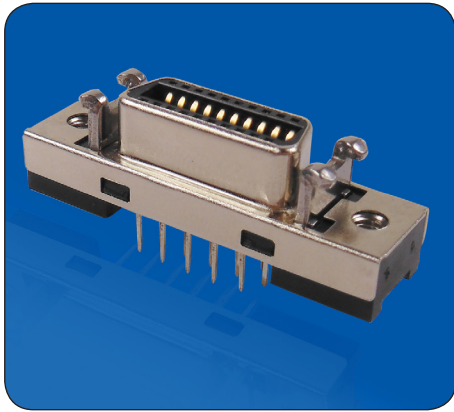
MATERIALS

- Contact Copper alloy
- Finish: Nickel plating all over
- Contact area: Au plating
- Soldering area: Tin plating
- Housing:High Temperature Thermo plastic, Glass Filled
- Shell: High Temperature Thermo plastic, Glass Filled

STANDARDS AND SPECIFICATION

- Product specification: 108-106126





KEY FEATURES

- High Density, 1.27mm Pitch
- 14/20/26/36/50 Pin available
- Right angle and Vertical version available
- Soldering version available
- Screw locking

APPLICATION

- Motion Drive
- CNC Controller

PRODUCT OFFERING

TE Industrial New PN	TE Industrial Project
1-2232516-1	Industrial SCSI Connector,REC, PCB Mount, 14 Pos, Right angle, die-casting
1-2232346-1	Industrial SCSI Connector, Plug, Soldering Wire, 14 Position, Plastic shell
2-2232516-1	Industrial SCSI Connector,REC, PCB Mount, 20 Pos, Right angle, die-casting
2-2232346-1	Industrial SCSI Connector, Plug, Soldering Wire, 20 Position, Plastic shell
3-2232516-1	Industrial SCSI Connector,REC, PCB Mount, 26 Pos, Right angle, die-casting
3-2232346-1	Industrial SCSI Connector, Plug, Soldering Wire, 26 Position, Plastic shell
4-2232516-1	Industrial SCSI Connector,REC, PCB Mount, 36 Pos, Right angle, die-casting
4-2232346-1	Industrial SCSI Connector, Plug, Soldering Wire, 36 Position, Plastic shell
5-2232516-1	Industrial SCSI Connector,REC, PCB Mount, 50 Pos, Right angle, die-casting
5-2232346-1	Industrial SCSI Connector, Plug, Soldering Wire, 50 Position, Plastic shell
2-2232304-1	Industrial SCSI Connector,REC, PCB Mount, 20 Pos, Vertical, Plastic
5-2232304-1	Industrial SCSI Connector,REC, PCB Mount, 50 Pos, Vertical, Plastic

While TE has made every reasonable effort to ensure the accuracy of the information in this brochure, TE does not guarantee that it is error-free, nor does TE make any other representation, warranty or guarantee that the information is accurate, correct, reliable or current. TE reserves the right to make any adjustments to the information contained herein at any time without notice. TE expressly disclaims all implied warranties regarding the information contained herein, including, but not limited to, any implied warranties of merchantability or fitness for a particular purpose. The dimensions in this catalog are for reference purposes only and are subject to change without notice. Specifications are subject to change without notice. Consult TE for the latest dimensions and design specifications.

